

The massive issuance and life-cycle management of electronic certificates constitute a **very high added value** expert trade, which requires namely a high security infrastructure and a **very specific operational know-how**, linked to **strong security constraints**.

KEYNECTIS enjoys:

- A **fully mastered software infrastructure**, **Sequoia®**, which can process several million of electronic certificates and address the needs of a great number of customers with various deployment requirements.
- An **operational know-how** gained through more than 6 years' experience, and which has grown at the core of major e-government projects required now by the banking world and industrial communities of interest.

→ Sequoia® characteristic features

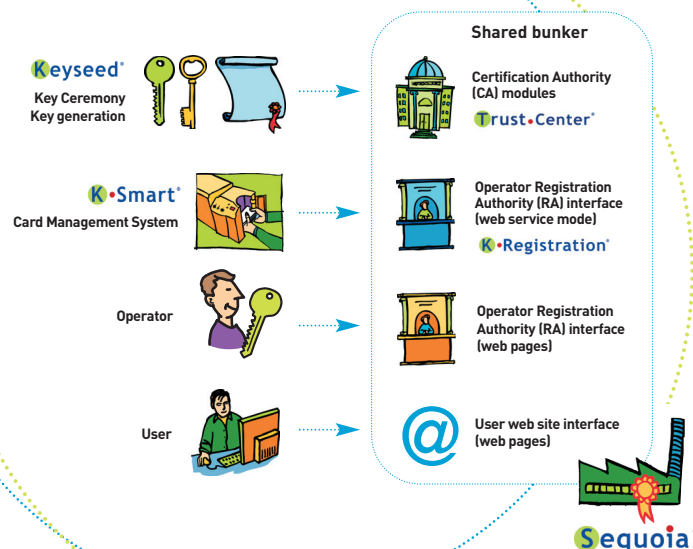
- ⊛ Its **ability to handle simultaneously a great number of environments** (CA, RA, certificate templates, ...) by combining technical and human resources
- ⊛ Its **generic form**, which enables a new requirement to be met, quickly and easily, via a simple web-oriented interface
- ⊛ Its **high level performance and reliability**
- ⊛ Its **architecture based on the latest techniques** (SOA, n-tiers)
- ⊛ Its **compliance with the most widespread standards** (X509 v3, PKCS, RSA, ECDSA, XML, SOAP, SAML, LDAP).

→ Sequoia® advantages

- ⊛ A **modular design**
- ⊛ A **dynamic and upgradeable management engine**
- ⊛ A software architecture designed for **performance and high availability**
- ⊛ A **wide range of functionalities** (signature, authentication, encryption, OCSP validation, key retrieval, directory interfaces, time stamping, card management)
- ⊛ A requirement for **security and compliance with standards**

Sequoia® software includes:

- A **core with the basic functionalities of a PKI**
- To which **complementary functionalities** can be added in order to address simple and generic needs as well as complex and specific needs.





→ Core Functionalities

K•Seed®

MANAGEMENT OF CA LIFE-CYCLES

- ⊛ Creation of Certificate Authorities and Authority Revocation Lists (ARL)
- ⊛ Creation of secrets on hardware resources (sharing of secrets between shareholders)
- ⊛ Cloning of cryptographic resources (HSM BULL TrustWay, Safenet LUNA CA, CA3 and SA)

Trust•Center®

MANAGEMENT OF CERTIFICATE LIFE-CYCLES

- ⊛ Signature of certificates, Certificate Revocation Lists (CRL) and Delta CRL
- ⊛ Configuration of Certificate Authorities and Registration Authorities
- ⊛ Implementation of third-party applications
- ⊛ Certificates renew and/or revocation

K•Registration®

SHARED REGISTRATION AUTHORITY

- ⊛ Secured Web interface
- ⊛ Registration of local operators (access rights)
- ⊛ Issuance, renewal and/or revocation of certificates in synchronous or asynchronous mode

→ Complementary Functionalities

K•Smart®

CUSTOMIZATION OF SMART CARDS OR USB KEYS

- ⊛ Graphic or electric customization
- ⊛ Publication and sending of mailers
- ⊛ Generation of PKCS#12 software certificates
- ⊛ Cards and tokens management

K•Recovery®

KEY ESCROW AND RETRIEVAL

- ⊛ Generation of secured keys
- ⊛ Key escrow and retrieval

K•Backoffice®

MANAGEMENT OF CUSTOMER BACK OFFICE

- ⊛ Management of certificate offers
- ⊛ Inventory management of physical media and users information

K•Stamp®

ELECTRONIC TIME STAMPING OF TRANSACTIONS

- ⊛ Synchronization of the system's clocks with a reliable time source (GPS)
- ⊛ Creation and signature of time stamp tokens

About KEYNECTIS

KEYNECTIS is the first certification services provider in France.

Its mission is to help companies to set up their trusted spaces to answer their secured applications.

Thanks to its technical expertise, its highly secured infrastructure and its proven physical and logical security procedures, KEYNECTIS has up today issued more than 12 million certificates and is the European leading trust services provider.



KEYNECTIS